



REGULUS GLOBAL

SCALABLE MOBILE HOSPITAL & CLINIC SOLUTIONS

This proposal contains data that shall not be disclosed outside the Government and shall not be duplicated, used, or disclosed – in whole or in part – for any purpose other than to evaluate this proposal. If, however, a contract is awarded to this offeror as a result of – or in connection with – the submission of this data, the Government shall have the right to duplicate, use, or disclose the data to the extent provided in the resulting contract. This restriction does not limit the Government's right to use information contained in this data if it is obtained from another source without restriction. The data subject to this restriction are contained throughout the entirety of this proposal.

SCALABLE U.N. LEVEL II HOSPITAL



WE SOLVE THE COMPLEX

REGULUS GLOBAL enables unparalleled global acquisition and sustainment solutions for the uncommon few standing in the gap to ensure a safer, more secure world. Operating in over 70 countries, our matchless team of experienced industry professionals, veterans, and retired government personnel are dedicated to solving your most daunting equipment, procurement, logistics support and acquisition challenges.

UNRIVALED REACH AND EXPERTISE

With proven expertise in procuring and delivering mission critical equipment and services to the U.S. Government and allied partners, specializing in equipment that falls under the International Traffic in Arms Regulations (ITAR) and the Export Administration Regulations (EAR). We specialize in aligning U.S.-allied foreign militaries' and law enforcement agencies' capabilities with that of their American counterparts, providing both cutting-edge equipment and best practices for implementation and sustainment.

COMMITTED TO EXCELLENCE

- > DDTC Registered Manufacturer, Exporter and Broker
- > TRACE Certified
- > Accomplished and Experienced Program Management Personnel
- > Comprehensive Risk Management Strategy Promoting Accountability
- > Robust Export Compliance Department for Licensing and Adhering to Stringent Regulations
- > ISO 9001:2015 Certification

DISTRIBUTION PARTNERSHIPS

REGULUS has partnered with select, industry-leading manufacturers to provide all expeditionary requirements. Our team provides unrivaled expertise and guidance in increasing your teams capability while simplifying the complexities of, language barrier, geopolitical climate, and export compliance.

- > Broker Services
- > Global Industry Network
- > In-Country Partnerships and Training
- > Export and International Logistics Expertise

INNOVATIVE SOLUTIONS



INNOVATION AT ALL LEVELS,

FROM THE MOST BASIC LINE ITEM TO
A FULLY DEPLOYABLE EXPEDITIONARY
SOLUTION IS IN OUR DNA

Large strides in Deployable Medical Technologies are achieved and advanced by the need to protect forces in route to the battlefield and during the battle. Soldiers at all levels of rank have always identified new solutions whether it be products, procedures or the combination of both to win the war and return home safely.

At **REGULUS GLOBAL**, every solution focuses on five key factors which are function, modularity, scalability, cost and sustainability. These factors determine success or failure (life or death) when responding to natural disasters, military operations and or terrorist attacks. Neglect any one of these factors and it's not a true solution. Innovation is the soul of **REGULUS**.

Our passion is driven by the need to provide the most effective and advanced solutions to support our clients, and to ensure our client's ability to be mission ready. **REGULUS** focuses on cost savings, faster delivery, reduced risk to functionally helps to produce better solution packages as a whole.

While in the private sector research and development teams are often responsible for innovation in civilian markets, in the military sectors it is often the soldier who uses firsthand experience in developing new and advanced solutions. Within the expeditionary/military sectors, innovation doesn't just mean creating new kits. It also means new ways of doing business. When dealing with large consignments of mixed products to be delivered to multiple destinations communication and understanding of requirements at all levels is key to a successful solution.



TOP 5 RULES THAT RESULT IN A SUCCESSFUL SOLUTION

- > FUNCTION
- > MODULARITY
- > SCALABILITY
- > COST
- > SUSTAINABILITY

THE TRUTH IN “TIME IS OF THE ESSENCE”

If procurers are to use their networks and knowledge to drive the kind of innovation discussed, then the key is early engagement. Why? Well, having plenty of time before delivery dates enables the procurement to thoroughly understand the program goals. Then they can go to the market with a problem that needs solving, rather than a shopping list of specific common goods and equipment. In this way, procurement teams can inspire new thinking, leading to better solutions. At **REGULUS GLOBAL** our primary role of procurement is simple, we will always drive to get items from A to B and to meet the agreed deadlines in the most efficient way possible. By using procurement to drive innovation this can help by reducing costs, cutting delivery times and making processes more efficient. Common reasons for failure is not having a primary, secondary and tertiary plan. When multiple threats arise from one or all the following:

- > SHIFTING POLITICAL LANDSCAPES
- > EMERGING CRISIS
- > UNPREDICTABLE WEATHER PATTERNS
- > NATURAL OR MAN-MADE DISASTERS

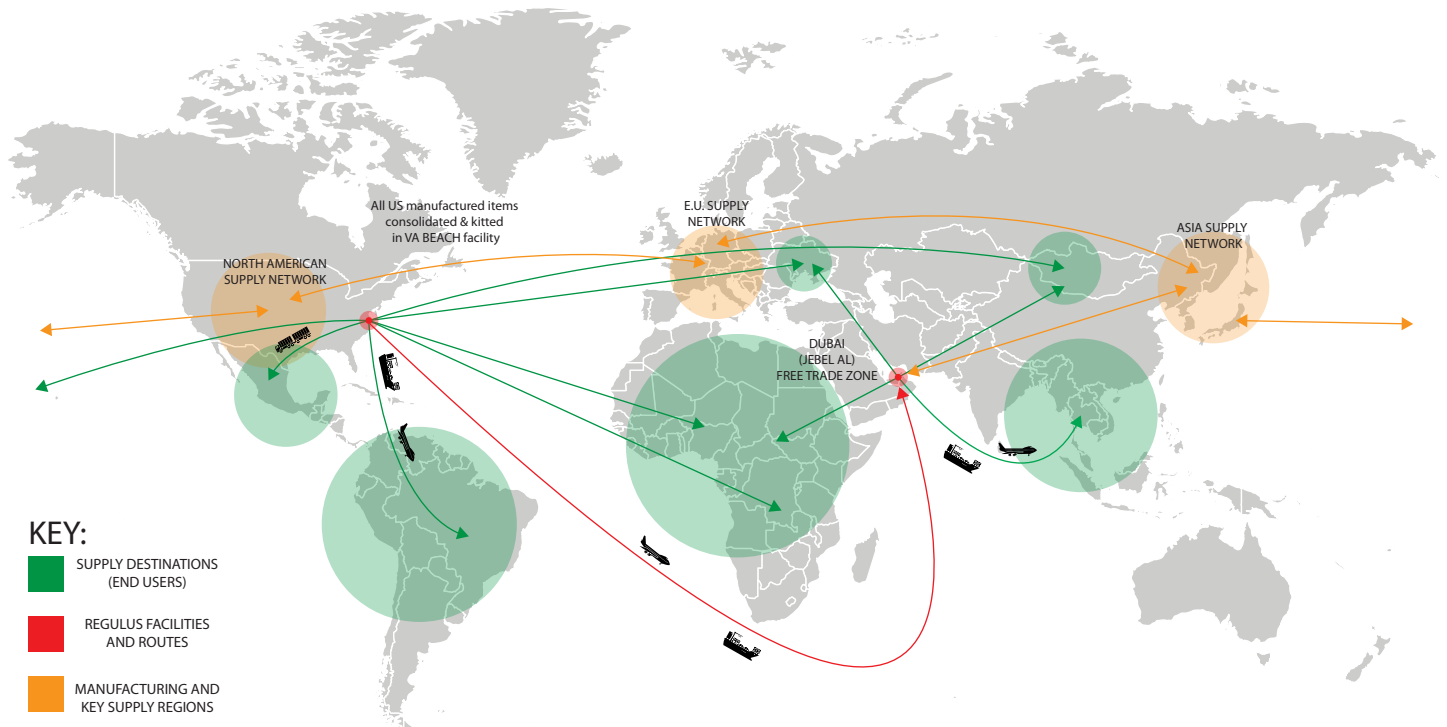
Having three plans of attack provides a clearer vision of next planned steps and assurance of a successful on-time delivery of an expeditionary solution. Building a supply chain resilience calls for robust yet nimble solutions that are responsive to changing conditions on the ground. At **REGULUS**, we believe that procurement teams can contribute to overcoming these challenges. It makes common sense to us that when procurement has time to understand program goals, seek novel solutions from the marketplace and test them in local contexts the soldier or end users have a better chance of meeting project objectives or winning the battle. That's why we're confident that driving innovation through procurement will bring multiple benefits to the Expeditionary sector in the coming years.



CASE STUDY: AFRICA 2016

Small simple changes to established processes can save time and money. During the Ebola crisis, millions of rubber boots, masks and aprons utilized for safety of the troops arrived in-country without being sorted before delivery. The Ebola emergency responders did not have the time nor the ability to kit whole bulk items of personal protective equipment together by size. Packaging items in a crisis zone will often fail and result in a waste of money, time, resources and most costly of all lives! Packaging goods earlier and in safer zones into batches containing the correct sizes for emergency responders at operating at ground zero, would have saved valuable lives, time and money.

GLOBAL SUPPLY CHAIN & CONNECTIVITY



REGULUS GLOBAL, has positioned itself to support the U.S. government and allied partners domestically and abroad. As a small but nimble business with a global footprint **REGULUS** is focused on providing our clients with quality and speed demanded in the new millennium. Our proven expertise in procuring and delivering full spectrums of equipment and services to a multitude of clients public and private are without equal.

Our headquarters and management team is in Virginia Beach, Virginia, and is comprised of Industry Professionals, U.S. Military Special Operations Veterans and Logistic specialists. **REGULUS** personnel are tasked to support their clients in the farthest reaches of the world traveling to international bases of operation to ensure we deliver on our commitments. **REGULUS** has a 7,500-square foot facility in Virginia Beach with 200+ secured climate-controlled pallet positions. Our facility houses an advanced consolidation area designed to build technical system integration, kitting, and assemblage of medical, communication, expeditionary and OCIE solutions. Additionally, located 1 mile from the HQ we maintain a 100,000 square foot secure warehousing space to support contracted surge capacity.

The Free Trade Zone in Jebel Ali (Dubai) is our remote consolidation, storage and surge facility. This facility is centrally located to support southwest Asia, the Middle East and Africa as a staging point for materials coming from multiple locations to be consolidated for clients. Staging in Dubai gives us the capability to deliver requirement via air anywhere worldwide within 12 to 24 hours and via sea in one weeks' time.

PROGRAM MANAGEMENT



COMMITTED TO EXCELLENCE IN SUSTAINABILITY

Our Program Management approach consists of a hybrid of internal resources and industry support. **REGULUS GLOBAL** has successfully provided multiple Mobile Hospital solutions. Our focus has been the entire requested package. We review the requirements with clients addressing all needs. Without a sustainable solution a mobile hospital will no longer support the mission, but become a hindrance and cost the team more than originally expected in time, money and life. The focus of sustainability is prevalent throughout all of our Program Management solutions to include OCIE systems, EOD programs, Drone and Anti Drone solutions and Special Projects programs.

- > Workforce consisting of world-wide employees and teammates that expedite global operations and ensure certainty of performance.
- > Extensive experience and continuous record of success in the international theatre.
- > Senior company leadership which spends half of the year OCONUS working with our partners.
- > Our expert and proactive leadership ensures our team's responsiveness and enables the close interaction required for effective execution of requirements.
- > Headquarters are located in the CONUS and offers our customers a convenient export licensing process.
- > Excellent relations with our customers; we've built a great reputation based on dependability and our commitment to compliance.

KITTING, CONSOLIDATION & EQUIPMENT SOLUTIONS



WE LISTEN AND COMMUNICATE WITH THE CLIENT AT ALL LEVELS.

Building the requirements from the end users input and collaboration with the program logistics team is the core to a successful solution. We can facilitate our clients kitting needs in our Virginia Beach facility or at other kitting facilities located at various international sites, close to the crisis such as Dubai. The “Solution Packages” are prepared and packaged to be operationally ready in a relatively safe zone. The kit is delivered to the crisis zone as a ready to go personalized package to be utilized by the first responders or end user quickly and efficiently. This process may not sound ground breaking, but this approach is rarely implemented in times of crisis. Addressing potential crisis in advance will help to save lives, time and money and will enable the client to meet critical delivery time lines. It’s just one way in which innovation in procurement can bring wider benefits to customers.

UNDERSTANDING THE CHALLENGE & IMPLEMENTING COLLABORATION

At **REGULUS** we are experienced working all levels of a program. When tasked to provide a solution our first requirement is to communicate at length with the implementing team or first responder teams on the ground which enables us to be clear about the program’s goals and the existing barriers preventing achievement. Collaborative efforts is the foundation for a successful innovation solution project that is sustainable and modular.



> GROUPING MULTIPLE PART #'S
TOGETHER INTO A SINGULAR
PART # AS A KIT

FREIGHT FORWARDING WITH A PURPOSE



REGULUS GLOBAL is providing solutions through Integrated Logistics, Construction Development, Strategic Procurement, Supply Chain Optimization, and Daring Humanitarian Assistance.

Our team has over 25 years of experience in logistics, construction, procurement, supply chain, and humanitarian assistance. We enjoy the challenging world of logistics and our goal is to provide successful solutions to our clients.

GLOBAL SERVICES OVERVIEW

EXPEDITED/SAME DAY SHIPPING

- > Services
- > Next Flight Out (NFO)
- > Ground Expedite
- > Hand Carry/On-Board Courier
- > Air Charter
- > White Glove
- > International Services

GLOBAL FREIGHT SERVICES

- > Next Day
- > Second Day
- > 3-Day
- > Deferred (3-5 Day)
- > Complete Ocean Services (FCL, LCL)
- > Customs Brokerage
- > International Services

ADDITIONAL SERVICES

- > Remote Delivery
- > Dangerous Goods Service
- > Specialized Truck Services (Flatbed, Air-Ride, Oversized, Escort Services, etc.)
- > Express LTL/TL Trucking
- > Warehousing and Distribution Services

VALUE ADDED SOLUTIONS

- > Supply Chain Management
- > Oversized Freight Solutions
- > Commercial and Cargo Aircraft Ability
- > Safety Management System

CONTAINER SOLUTIONS



Our container solutions are scalable, modular and designed to serve patients in remote or isolated environments, or in areas where a more traditional hospital is impractical. The containers are designed by medical and expeditionary professionals with extensive field experience working with disaster relief and health services in developing nations worldwide. Our mission is to provide a true turn-key solution. **REGULUS GLOBAL** and its staff has an international presence providing mobile hospitals in: Mali, Liberia, Sierra Leone, Senegal, Ghana, Mongolia, Afghanistan and Iraq. Modules of our mobile hospitals were used extensively in Liberia during the Ebola epidemic.

“THE IMPORTANCE OF WORKFLOW REALIZED THROUGH EXPERIENCE”

More equipment does not always mean a better hospital if the work flow is obstructed. The actual finished interior floor space of a 20 foot clinic is 17 feet X 7 feet or 119 square feet. Designs that attempt to divide this space into multiple rooms or that oversell the usable floor space will lead to ineffective medical staff reduced quality healthcare for the patients.

Our floor plans emphasize the importance of free-flowing workspace. This has been accomplished first by building structural walls that all medical equipment and storage cabinets can be mounted to, regardless of weight. This is very important, as moving equipment up off the floor and onto the walls frees up valuable floor space. Second, the layout has medical storage cabinets at the far ends of the room and all medical equipment mounted on one long-wall creating a virtual hall-way for staff and patients to move freely. Another distinguishing feature of the **REGULUS** design is that our entry door and windows are located right behind the double container cargo doors. First, the double cargo doors act as an extra layer of security when closed. Second, this allows the container to be shipped as normal cargo instead of break-bulk. Any doors or windows cut and welded into the metal skin voids the container CSC safety certification. Without a valid safety certification, the container cannot have other shipping containers stacked upon it, which results in increased shipping cost for the client. Third, installing windows and a door on the long side of the wall decreases the surface area that we use to mount computers, tables and medical equipment.

All of the containers are built to be bootable to tents, other containers or permanent buildings making our solution the most versatile programs that flex to any requirements in any austere environment.



TENTED SOLUTIONS



HDT's Expeditionary Shelter Systems are designed to meet a variety of user applications ranging from emergency medical/hospital, equipment warehousing and personnel billeting requirement. HDT designs, engineers, and manufactures AirBeam®, Base-X®, and DRASH® branded shelter systems. HDT designs and manufactures expeditionary shelter structures and completely-configured base camps that are designed to work seamlessly with our container solutions, power generation, heating and cooling, and protective air filtration systems to make the mobile hospital functional and safe.

REGULUS GLOBAL'S shelter solutions are designed for military and emergency medical applications in any environment.

- > Medical Shelter Modular Systems are rapid-deploying, mobile facilities with complete infrastructure/inventory for stabilization and treatment of patients.
- > Integral liners (with floor) provide a clean environment for medical operations. A pre-installed electrical system and air distribution plenum are standard.
- > Emergency Medical Treatment and Triage Solution Module (E-MTTS MOD) is a rapid-deploying, mobile facility with complete infrastructure/inventory for stabilization and treatment-in-place of patients during mass-gathering incidents.
- > Three configurations for surge-capacity patients (12 bed, 25 bed hub and spoke and 25 bed square) are available. These freestanding units are designed for quick set-up and can be augmented with medical equipment and supply sets to provide a total turnkey solution for mobile medical needs.
- > Options for rapid, organized response to any critical medical situation include alternate care sites used during a mass casualty event and/or drive-thru distribution systems for use during a pandemic to hospital surge facilities.
- > Medical Surge – Rapid-deploying, mobile facilities with complete infrastructure and inventory for responding to a medical surge, incident deployment, isolation or mass gathering. A variety of sizes are offered, and medical supplies and equipment are customized to meet your specific needs.
- > Drive Thru Systems – Drive-Thru Clinic System offers an extremely versatile mode of providing services or conducting check-points during any type of emergency situation from a mass casualty event to a pandemic.
- > Modular Mobile Hospital Configurations – can provide complete stand-alone mobile hospitals customized for 12 to 100 beds or more. Every medical modular shelter is designed to stand alone in the scalable package to meet your specific requirement.



POWER SUPPLY OPTIONS



REGULUS GLOBAL'S power system solutions are rugged and durable. Supporting both fossil fuel and renewable energy options as a hybrid or stand alone. We are driven and committed to provide innovative energy efficient and reliable power generation solutions supporting mobile field hospital missions.

REGULUS HAS POWER EXPERTISE IN:

- > Mobile Power Generation
- > Portable Solar Solutions
- > Power Level Management
- > Alternative Power Source Utilization and/or Integration
- > Power Conditioning
- > Load Balancing
- > Distribution-of-Power Technology

REGULUS POWER PRODUCTS INCLUDE:

- > Ability to Use Tier I and II Fuels (**Dirty Diesel**)
- > Generator ECU Trailers (GET) - Trailer mounted generators and ECU for cooling/heating, with fuel tank for complete mobility.
- > Generator Sets - 10 kW, 35 kW, 60 kW and up to 100 kW power generators
- > Generator Trailers - Trailer-mounted generators with fuel tanks for complete mobility.
- > Generator Support Equipment - Fuel/Cargo/Shelter Support Trailers, Cargo/ECU Trailers and Portable Load Banks
- > Power Distribution Units - 120AMP, 200AMP and 400AMP PDU's and Utility Distribution Boxes
- > Solar Generators - Expandable Solar Array Panels

WORLD WIDE SERVICE

Regular servicing is the best way of ensuring your engine lasts as long as possible. Missing service intervals can lead to reduction in performance, often a drop of 20 percent in performance can happen before the operator notices. It can even lead to a vital part failing, which is costly to repair and results in critical downtime. Each generator we supply comes with a detailed list of checks for you to carry out at set intervals. All the parts needed will be made available from local distributors or online via an assigned specialist who will coordinate movement to austere regions.



POTABLE WATER SOLUTIONS



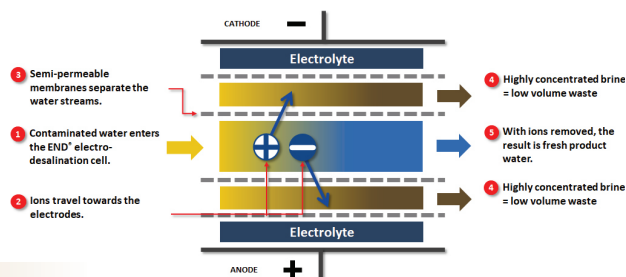
MAGNA IMPERIO SYSTEMS CORPORATION

Magna Imperio Systems Corporation (MIS) gets the most out of every drop with high recovery water treatment solutions. Enabling solutions to the world water crisis, these systems are deployed in a wide variety of applications from drinking water to produced/flowback water treatment. MIS' high recovery solutions are powered by END® technology: a transformation of traditional electrodialysis reversal, delivering up to 99%+ clean water recovery at up to 50% lower specific energy use at competitive cost.

END™ SYSTEM OPERATION

END® technology revolutionizes water treatment with its proprietary desalination stack. This stack is made up of low energy dissimilar electrodes, state-of-the-art membranes, and novel membrane spacers.

This combination of components, along with novel process designs is what makes the high performance of END® technology possible.



END™ PROCESS SYSTEM

The modular design and advanced controls of END® systems make them an efficient and cost-effective choice for a wide range of municipal, industrial, and mobile water treatment applications. Depending on client needs, most systems are provided as a complete treatment process including feed pumping, brine and product tanks, chemical cleaning equipment, a full complement of process instrumentation, and fully integrated PLC based controls.



MAXIMUM RECOVERY

Electrochemical separation of dissolved salts is far more efficient than competing pressure driven processes. Nano-diffusion of salts occurs across each layer in the membrane stack based on the electric potential applied to the process. Salts pass through the membrane and into the brine stream where they can be highly concentrated and still remain in solution. The END® result is very high recovery of up to 98% in some applications.

APPLICATION TESTING

In-house bench testing of each application ensures that every END® system is optimized before ever leaving our factory. Bench testing completely simulates the full-scale process to ensure that all results are directly scalable to each site.

SYSTEM & SERVICE

Each END® system is designed and fabricated by our in-house team of application engineers and scientists. Our world-class team has over 200 years combined experience in the design, operation and service of advanced water treatment technologies. Worldwide service and support are available anytime from our Houston, TX facilities.

TRIAGE & TRAUMA



PATIENT RECEPTION TENT

The patient reception area allows the hospital staff to improve the access to primary care for all patients with minor medical conditions to be evaluated and screened for basic health care and all ancillary services. The tent is manned with a nurse, medics and administration personnel. It consists of a vital sign's evaluation and private interview area. All patients are logged in and assigned a private bar code that tracks all care either as an outpatient or inpatient. The tent can accommodate up to 20 people in the waiting area and support up to 6 patient treatment bays. Ancillary services the hospital can support is Dental, Optometry, Lab, X-Ray, Ultrasound, Pharmacy and in some cases Psychiatry.



TRIAGE AND TRAUMA SUITE

The Triage Suite has been adapted to provide rapid movement of casualties through the highest continuum of care within the deployed theatre, a mass casualty event may occur at the Mobile Hospital with little or no advance notice. To further complicate the mass casualty event the hospital is equipped to support injured combatants, noncombatants, and/or children. The modular triage zone quickly transition from assessment zone to a robust trauma center.



Trauma Suite reception quickly manages the triaged patient with six advanced trauma life support stations equipped with state of the art equipment that has been proven to work in austere environments. The trauma suite expediently diagnoses and prepares critical surgical patients for ICU and/or the OR directly. The suite is designed to support multiple critical patients with the ICU in close proximity can easily grow to 9 bed trauma station providing a reduction in preventable mortality and morbidity.



10 PERSON WARD TENT

The Role 2 Enhanced Ward Facility is critical to supporting the hospital by providing monitored advanced health care to in-patients in order to return the patient back to duty or service. Patients who can be treated within the theater evacuation policy. The wards of the hospital are modular and scalable.

- > Scalable Options: the ward can start by holding 10 patients and grow up to 100.
- > Modular Options: the ward(s) can be separated into male or female facilities, isolation (Ebola) ward(s) or ICU step down wards.

Hospitalization provides definitive medical care for soldiers capable of returning to duty and essential care for patients who must be stabilized for medical evacuation out of the area of operations.



SURGICAL CAPABILITIES



SURGICAL THEATRE

The Mobile Operating Theatre by **REGULUS GLOBAL** is an advanced healthcare code compliant Mobile Ambulatory Surgery facility designed and manufactured to operate in austere environments. The modular 2 bed surgery suite is designed to support disaster readiness application and international humanitarian missions. Scope of surgery spans from minor surgical procedures to full thoracic cases. The scalable surgical suite can support two surgical cases simultaneously and can be easily doubled with a bootable 2nd surgical suite.

- > Standard Equipment
 - > Surgical Bed x 2
 - > Anesthesia System x 2
 - > Dedicated O2 Generator
 - > Full Suite of Surgical Sets x 2
 - > Fully Equipped Crash Carts x 2

All systems are customizable to support individual requirements.



CENTRAL STERILIZATION CONTAINER

The central sterilization container is a fully deployable integrated system supporting the entire mobile hospital performing all cleaning and sterilization on medical devices, equipment and consumables; for subsequent use by the staff in the operating theatre of the hospital and also for other aseptic procedures, e.g. catheterization, wound stitching and bandaging in a medical, surgical, maternity or ward support.



ANCILLARY SERVICES



DENTAL SUITE

The dental suite contains a fully self-contained mobile dental operatory solution, ideal for office and deployable dental care and provides quality performance in any setting. Fully self-contained ergonomic dental cart includes automatic highspeed and lowspeed air handpiece connections with fiber optics. The military field chair provides Hands-Free operation. The portable dental chair with adjustability functions are comparable to standard office dental chairs providing patient comfort and safety. The Deployable Hand Held X-Ray is specifically tailored for imaging extremities. The device is easy to operate and generates sharp and clear images. The NOMAD MD works with all types of receptor media; film, phosphor plates and digital imaging plates. This is a truly portable X-ray device. When it is combined with a battery operated DR panel and a laptop, it is capable of imaging anywhere, anytime.

The suite contains:

- > Integrated Compressor
- > Electric & Air Handpiece Controls
- > Strong Suction, Dual Voltage and more
- > Built-in Electric Operative System
- > 3-Way Air/Water Syringe
- > High & Low Volume Suction with Automatic Overflow Protection & Solids Trap
- > Scaler (Piezo Ultrasonic)
- > Wet/Dry Food Control
- > Amalgam Separator
- > Air Filter Moisture Separator
- > 2 Duplex Accessory Hospital Grade



OPTOMETRY SUITE

Utilized to provide initial diagnosis and management of eye injuries occurring on the battlefield and detects, diagnoses, treats and manages ocular disorders, injuries, disease and visual dysfunctions in U.S. fighting forces or supported humanitarian missions. Intended for regular or repeated collection, analysis, archiving, interpretation, and distribution of health-related data used for monitoring the health of a population or of individuals, and for intervening in a timely manner to prevent, treat, or control the occurrence of disease or injury, which includes occupational and environmental health surveillance and medical surveillance subcomponents in austere environments.

Optometry module contains:

- | | |
|--|--------------------|
| > Hand Held Tonometer | > Occluder |
| > Binocular Indirect Ophthalmoscope | > Flippers |
| > Hand Held Autorefractor/Keratometer | > Retinoscope |
| > Astron Prism Bar Combo Vertical/Horizontal Set | > Transilluminator |
| > Portable Slit Lamp Prism | > Ophthalmoscopes |
| > Lensometer | |



ANCILLARY SERVICES CONT.



X-RAY IMAGING SUITE

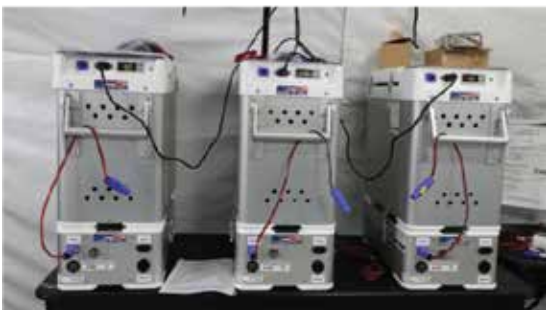
Our portable digital imagery suites encompass both X-ray and Ultrasound solutions focused on supporting all deployed and austere medical practices. From individual imaging equipment components to complete digital radiography systems, we work with each and every client to custom design the perfect imaging solution. We are focused on international standards and trusted by military healthcare professionals worldwide, our portable medical imaging systems supply innovative and ruggedly reliable solutions. Solution sets are easy to use, ultra-durable, and create digital images of superior quality.



LABORATORY SUITE

Our mobile laboratory suite is designed as a full service laboratory. The system is designed to be used as a bootable stand-alone laboratory within the tented facility. The mobile laboratory can also be attached to any brick and mortar clinic to supplement or replace the current laboratory (inside the hospital). This mobile laboratory is capable of performing many types of tests. We integrate any test equipment that is required to specific requirements.

Our medical laboratory is specifically designed as a clinical laboratory where tests can be performed (on clinical specimens), in order to get information about the health of patients as pertaining to the diagnosis, treatment, and prevention of diseases. The services are scalable to support hematology, microscopic study, chemistry and blood banking support.



STORAGE & LOGISTICS



STORAGE AND DEPLOYMENT OPTIONS

The containers are designed for rapid deployment. Preventing the wasting of precious time repacking every item for shipping, only to unpack it for customs, then unpack again when it arrives at the final location. Our deployable solutions for mobile hospitals allow you to store items in the same container in which you deploy with and then utilizes it as a safe protected logistic storage system.

Re-Usable Triwall boxes provide for the safe storage and separation of the various medical modules. Once the tactical triwall is emptied in the suite of use, it then is utilized as internal box storage and counter space for medical equipment.

Every item within the hospital has a specific storage position and that storage system is always used as secondary furniture in the active hospital. Thus, alleviating wasted space and nonuse during operations.



LOGISTIC SUPPORT

The Healthcare industry relies on daily delivery services. A mobile hospital typically operates remote of common supply chains and many times supplies are received months after being ordered. The logistic support, just like the entire hospital is modular and scalable, meaning that the hospital starts with a 15 to 30 day consumable set and grows from there in accordance to their patient loads. **REGULUS GLOBAL** works with the local and international suppliers for support of all equipment in the hospital in order to provide a reduction in shortfalls of logistic requirements. Many of the items shipped are sensitive and require specialized handling and care. We have closed the gap of delivering to austere regions anywhere in the world. Utilizing a Barcode Supply Management and Workflow Solution system can drive more effective patient care by having all supplied items in stock and ordered items tracked even to austere regions of the world.



CASEVAC SUPPORT



REGULUS GLOBAL can provide solutions for Personnel Recovery, Casualty Evacuation, (CASEVAC) and Search and Rescue (SAR) services in Africa, Middle East and Asia. We utilize multiple vehicles from ambulances, rotary-wing, short takeoff and landing fixed-wing aircraft to long range advanced trauma life support jets. Our personnel have extensive history of operations throughout Africa and the Middle East in providing ground, fixed wing, rotary-wing search and rescue, and personnel recovery operations in austere environments, as well as overwater.

Solutions include:

- > Providing Ground Ambulance Programs
- > Providing turn key trauma packages for both Ground and Air Operations
- > Providing rotary and fixed wing CASEVAC platforms (procured or leased)
- > Long Range MEDEVAC Service Packages



COMPLIANCE



REGULUS GLOBAL assists foreign end users, select distributors, and U.S. manufacturers with the necessary preparation of licensing and export paperwork, license tracking, review of approvals, provisions of guidelines for all export activities, and guidance in the establishment of effective internal compliance processes. We also help navigate the difficulties of currency risk, language barrier, cultural issues, and overall export complications.

The International Traffic in Arms Regulation (ITAR) and the Export Administration Regulations (EAR) are two United States export control regulations that affect the warehousing, manufacturing, sales, and distribution of technology, software, hardware, and all related technical data. ITAR contains a United States Munitions List (USML) of restricted articles and services. EAR contains a Commerce Control List (CCL) of regulated commercial items, including those items that have both commercial and military applications.

We are registered with the U.S. Department of State, Directorate of Defense Trade Controls (DDTC), as an Exporter, Manufacturer and Broker of Defense Articles and Services enumerated in the United States Munitions List (USML) and with the U.S. Department of Commerce, Bureau of Industry and Security (BIS), as an export license submitter of dual use items & military items that transitioned from the ITAR to the EAR on the Commerce Control List (CCL).

In addition, **REGULUS** maintains a Type 11 FFL Importer of Destructive Devices with the Bureau of Alcohol, Tobacco, Firearms and Explosives (BATFE) along with the NFA Special Tax Stamp (SOT). **REGULUS** holds a TRACE certification which signifies that we have completed internationally accepted due diligence procedures. This certification demonstrates our commitment to commercial transparency, allowing us to serve as a valued business partner to multinational companies. Compliance with the U.S. Department of the Treasury, Office of Foreign Asset Control (OFAC), who enforces economic and trade sanctions based on U.S. foreign policy and national security goals against targeted foreign countries and regimes, terrorists, international narcotic traffickers, those engaged in activities related to the proliferation of weapons of mass destructions, and other threats to the national security, foreign policy or economy of the United States, is mandatory. Lastly, compliance with the Foreign Corrupt Practices Act (FCPA) is of the utmost importance to ensure no corrupt intent to influence an award or continuation of business or to gain an unfair advantage is taking place.

The Compliance Department understands the obligations of the ITAR and EAR, and has established an export compliance program, which includes designation of an ITAR Empowered Official, required knowledge & training in export control reform and a trade compliance program.



- > DDTC Registered Exporter/Manufacturer/Broker
- > BIS Registered SNAP-R User
- > FCPA Anti-Bribery
- > OFAC
- > BATFE

REGULUS GLOBAL, LLC

1528 TAYLOR FARM ROAD, SUITE 105
VIRGINIA BEACH, VA 23453 USA

Office: +1-757-689-4400

Fax: +1-757-301-6844

E-mail: sales@regulusglobal.com

REGULUSGLOBAL.COM